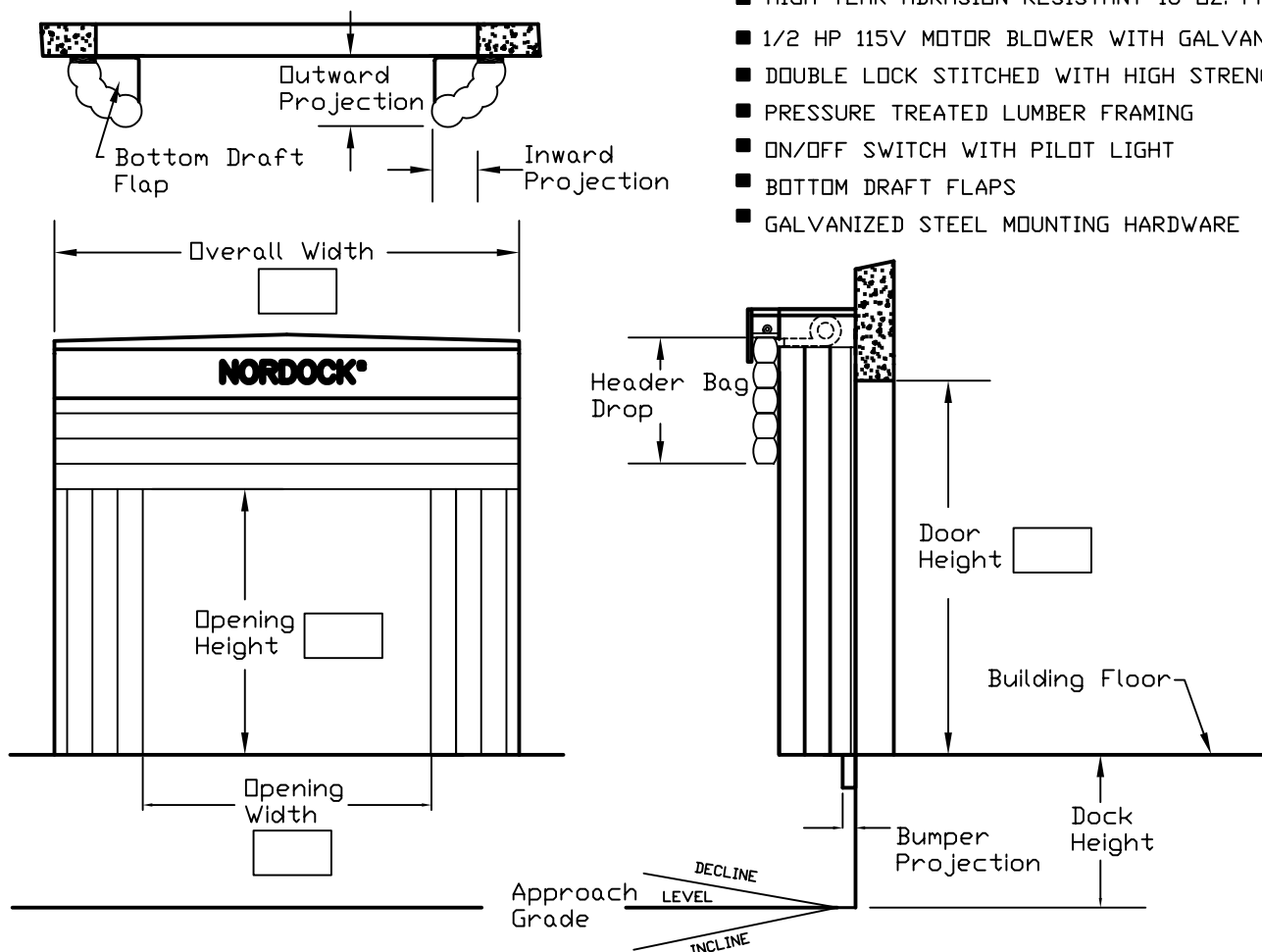


# IS SERIES - MODEL 550 INFLATABLE DOCK SHELTER

# NORDOCK®

## FEATURE SUMMARY

- HIGH TEAR ABRASION RESISTANT 16 OZ. FABRIC
- 1/2 HP 115V MOTOR BLOWER WITH GALVANIZED HOOD
- DOUBLE LOCK STITCHED WITH HIGH STRENGTH THREAD
- PRESSURE TREATED LUMBER FRAMING
- ON/OFF SWITCH WITH PILOT LIGHT
- BOTTOM DRAFT FLAPS
- GALVANIZED STEEL MOUNTING HARDWARE



## SITE DIMENSIONS

DOOR WIDTH: \_\_\_\_\_"

DOOR HEIGHT: \_\_\_\_\_"

DOCK HEIGHT: \_\_\_\_\_"

BUMPER PROJECTION: \_\_\_\_\_"

APPROACH GRADE: \_\_\_\_\_ % SLOPE

INCLINE  DECLINE  SPLIT DECLINE  \_\_\_\_\_" LEVEL

GRADE WALL EXTENSION: \_\_\_\_\_"

BUILDING WALL SETBACK: \_\_\_\_\_"

## SHELTER SPECIFICATIONS/OPTIONS

BASE FABRIC: 16OZ. VINYL  16 OZ. HYPALON

UNIT WIDTH: 136'  OTHER \_\_\_\_\_"

UNIT HEIGHT: 140'  OTHER \_\_\_\_\_"

INWARD PROJ.: 24'  OTHER \_\_\_\_\_"

OUTWARD PROJ.: 24'  OTHER \_\_\_\_\_"

HEADER BAG DROP: 48'  OTHER \_\_\_\_\_"

OPTIONS: STEEL FRAME

GALVANIZED STEEL FRAME

STATIONARY VERTICAL PANELS

EXTRA INWARD PROJECTION \_\_\_\_\_"

OTHER: \_\_\_\_\_

## ORDER INFORMATION

BILL TO: \_\_\_\_\_

SHIP TO: \_\_\_\_\_

ORDER DATE: \_\_\_\_\_ QUANTITY \_\_\_\_\_

COST EACH: \_\_\_\_\_ TOTAL COST \_\_\_\_\_

PURCHASE ORDER NO. \_\_\_\_\_

NOTES: \_\_\_\_\_

\_\_\_\_\_

\_\_\_\_\_

\_\_\_\_\_

\_\_\_\_\_

\_\_\_\_\_