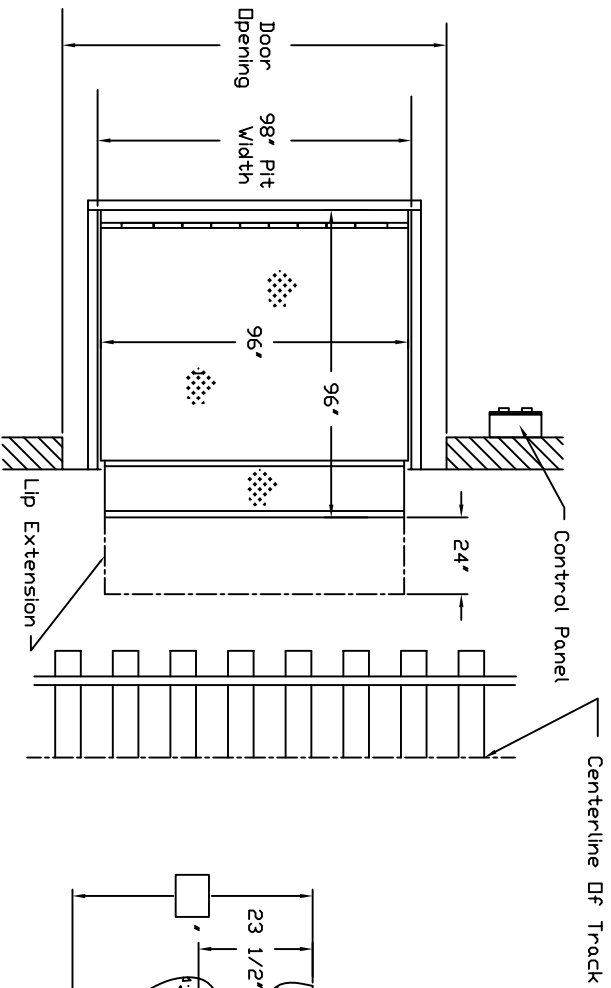


# NORDOCK®

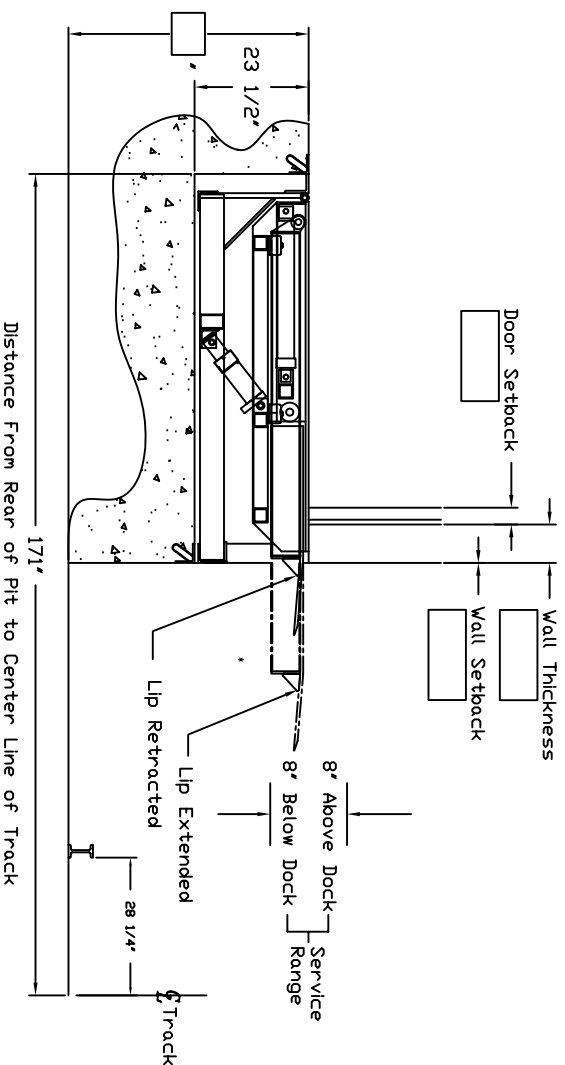
## BOXCAR™ SERIES SLIDING LIP HYDRAULIC RAIL RAMP

### MODEL SRD ORDER INFORMATION

RAMP WIDTH \_\_\_\_\_ ' CAPACITY \_\_\_\_\_ LBS.  
 QUANTITY \_\_\_\_\_ ORDER DATE \_\_\_\_\_  
 DOCK TO CENTERLINE OF FIRST RAIL \_\_\_\_\_ '  
 DOOR OPENING WIDTH \_\_\_\_\_ ' DOCK HEIGHT \_\_\_\_\_ '  
 RAIL CAR HEIGHT RANGE \_\_\_\_\_  
 CURVED TRACK YES  NO  (IF YES, A SITE PLAN IS REQUIRED)  
 VOLTAGE SUPPLY 208  230  460  600   
 BILL TO: \_\_\_\_\_  
 SHIP TO: \_\_\_\_\_



PLAN VIEW



SECTION VIEW

### Feature Summary:

Fully Hydraulic Push Button Operation Including Lift, Lip Extend & Retract & Stop. Hydraulic Extension Allows Inching of the Lip In & Out of Rail Car Without the Need for End Load Arms. Automatically Retracting Support Legs Position the Deck for Storage Level With the Dock Floor.

### Construction:

Deck Plate, Lip Plate, Beam Sections are of Minimum 50KSI Material, Power Unit Includes A 1 HP TENV Motor Prewired and Fully Plumbed & Tested. Control Panel is NEMA 12 Wall Mounted With 120 Volt Secondary Voltage. Hydraulic Cylinders are Heavy Duty Regenerative Type With Polished Chrome Rods, Guide Bearings and High Pressure Seals. Hoses are SAE 100R2 High Pressure. Continuous Rear Hinge With SAE 1045 Zinc Plated Rod Coated With Anti-Seize Lubricant.

### Operation:

Operator Pushes the Raise Button to the Top of Travel, Then Pushes the Extend Button to Move the Lip Section Towards the Rail Car. Releasing the Extend Button Allows the Deck to Lower & Pushing the Extend or Retract Button Holds the Deck in it's Vertical Position. The Operator Inches the Lip In & Out to Position it Firmly On the Rail Car. To Park the Dock, Push the Raise Button Until the Deck is Above the Floor, Then Push the Retract Button Until the Lip is Fully Back. Releasing the Button Allows the Deck to Float to the Stored Position, Level with the Floor.